



How can you help?

Donate - fund programs for children & adults

\$100 can support an adult's independence
\$500 can help a baby get to a specialist
\$1000 can fund a TAMBO respite event for families

Hire - find adults who are eager to work with you

We can show a business how easy it can be to make a person with a developmental disability part of its team. The key is to make the right match between the person and the work that needs to be done. Hiring people with developmental disabilities offers a number of financial advantages too.

Host - change an adult's life by providing a home

By becoming a host home provider you get the chance to have an adult with a developmental disability live in your home and become part of your family. This is a great way to stay at home and be paid for meaningful work!

Work - do a job that really makes a difference

CCI is looking for mentors to work as support staff, roommates, or host home providers. Since we provide services 24 hours a day, 7 days a week, we offer unique options from part to full time for everyone including students, parents, and seniors.



Volunteer - help kids & adults

Volunteers are needed monthly for our TAMBO Respite Program to "buddy up" with a child and play games, or read books, or to participate in music and art activities and have fun. We also need help at our annual Festival of Trees fundraiser in December.

Wave - if you see us around don't be shy, say hi

CCI encourages growth and independence by providing opportunities for people with developmental disabilities to get into the community. If you see us around - wave and say hi.

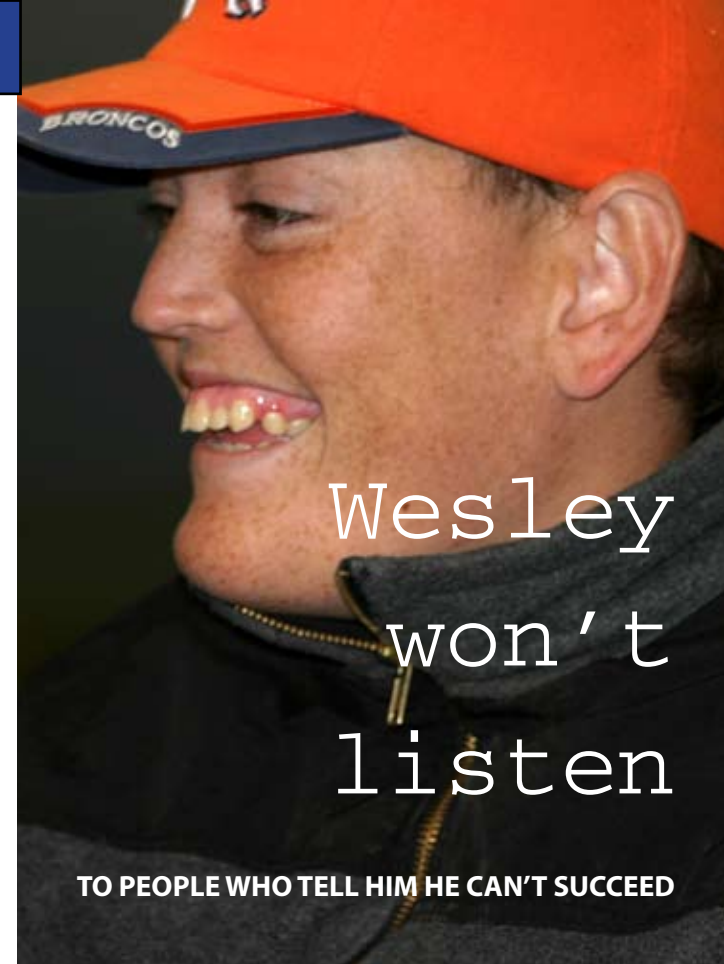
About Community Connections...

- Nonprofit of the Year 2008
- Helping kids & adults since 1985
- Serving over 250 people a year - from babies to senior citizens
- The only organization in La Plata, Montezuma, Archuleta, Dolores & San Juan counties offering comprehensive services
- Adults receive assistance with housing, health and safety, employment, personal care, recreation, social integration, and financial management
- Children under 3 receive screening and assistance in a home setting that concentrates on the needs of the family and their child
- Families receive financial assistance & respite
- One of the largest nonprofits in our area employing over 120 staff
- Less than 11% of operating revenue supports administrative costs (beating industry standards)
- Every year we need donations to help fund vibrant programs for the people we serve



"I can better others' lives and give them opportunities that they might not be able to get without my help." Chrissy Thorpe, Host Home Provider

Photos from front to back: Broncos' fan Wesley Hamilton, musician Robert Mestas, artist Stephen Goff, preschooler Samantha Grimm, cycling & downhill ski Special Olympics medalist Brandi Clay, support staff Bridgette Simplicio with comedian Richard Siegele.



Wesley
won't
listen

TO PEOPLE WHO TELL HIM HE CAN'T SUCCEED



Ask us about developmental disabilities

The mission of Community Connections, Inc. is to provide opportunities for children and adults with developmental disabilities to lead healthy and fulfilling lives within our community.

6 million Americans have a developmental disability

A developmental disability is defined as a severe and chronic disability which originated at birth or before the age of 22, is expected to continue indefinitely, and restricts the individual's functioning in several major life activities such as self-care, language, learning, mobility, capacity for independent living, self-direction, and economic self-sufficiency.



Examples include:
Autism
Brain injury
Cerebral palsy
Down syndrome
Epilepsy
Fetal alcohol syndrome
Spina Bifida

People with developmental disabilities benefit from comprehensive long-term services. Adults are often able to be more active, productive, and independent; which benefits their communities as well. For children, providing support early improves a child's ability to develop and learn; for some children it may even prevent the need for special services later.

What do people with disabilities want?

"We all want the same basic things out of life: a decent and comfortable place to call 'home,' something meaningful to do during the day, some close friends with whom to share the good times and from whom we receive support in difficult times, and the opportunity to make our own decisions about things that will affect our personal lives. People with disabilities want these same basic things and are increasingly speaking up for themselves about what they want. And staff, family and State agency professionals are beginning to really listen." Excerpted from "Home, Sweet Home" by Susan L. Babin, IMPACT: Feature Issue on Supported Living (1995), published by the Institute on Community Integration.

Day program options for adults

Community Connections serves over 100 adults with a variety of abilities. Some adults choose to attend our day programs in Durango, Bayfield, and Cortez Monday through Friday to start their day before going into the community to work, socialize, learn skills, and recreate.

The HOLLY HOUSE in Durango serves over 20 adults and features a garden and a greenhouse. The



BAYFIELD day program serves around 5 adults per day. The PINE STREET HOUSE in Cortez serves around 20 adults and partners with the Cortez School District and Southwest BOCES to offer a transitional work center for middle & high school students.

Residential services for adults

In order to promote independence, CCI offers residential choices, instead of group homes. Adults may live alone, with roommates, in a host home, or in an assisted living facility.

Employment opportunities for adults

The Division for Vocational Rehabilitation and CCI work together to match an adult's skills with local jobs. Once a match has been formed CCI can provide job coaching & supported employment to the employee if needed.

*"I feel the partnership is very beneficial for both parties, and would recommend CCI's workers to other employers".
Josh Pumphrey, Intermountain Farmers Association.*



CCI is looking for employers who want to hire someone who is reliable and hardworking. Employers can also get tax credits.



CCI is looking for donors and monthly volunteers to make the valuable TAMBO respite program happen all year round.

Programs for children

Children under three who have a significant delay in development or a condition known to have a high probability resulting in a significant delay are eligible for Early Intervention services. Families who have a concern about their child's development can contact CCI's Early Intervention programs: SAN JUAN KIDS (La Plata, Archuleta, and San Juan) and SOUTHWEST KIDS (Montezuma & Dolores) for a free screening. Once eligible, families may access vision and hearing services, speech therapy, family training, physical and occupational therapies, nutrition consultations, & many other supports that assist families in encouraging growth in their young children.



Programs for families

The FAMILY SUPPORT SERVICES PROGRAM (FSSP) provides resources to families who have a member with a developmental disability living in the family home. FSSP funding can be used for home modifications, educational materials, travel costs associated with medical appointments or surgeries, alternative therapies, medical expenses not covered by insurance, sibling support, recreational and social activities, and respite, among other services.

The TAMBO Respite Program offers parents a great opportunity for respite from the stress of caring for a child with disabilities. While the parents take a break, the children are paired with a "buddy" who keeps them safe and entertained until their parents return.